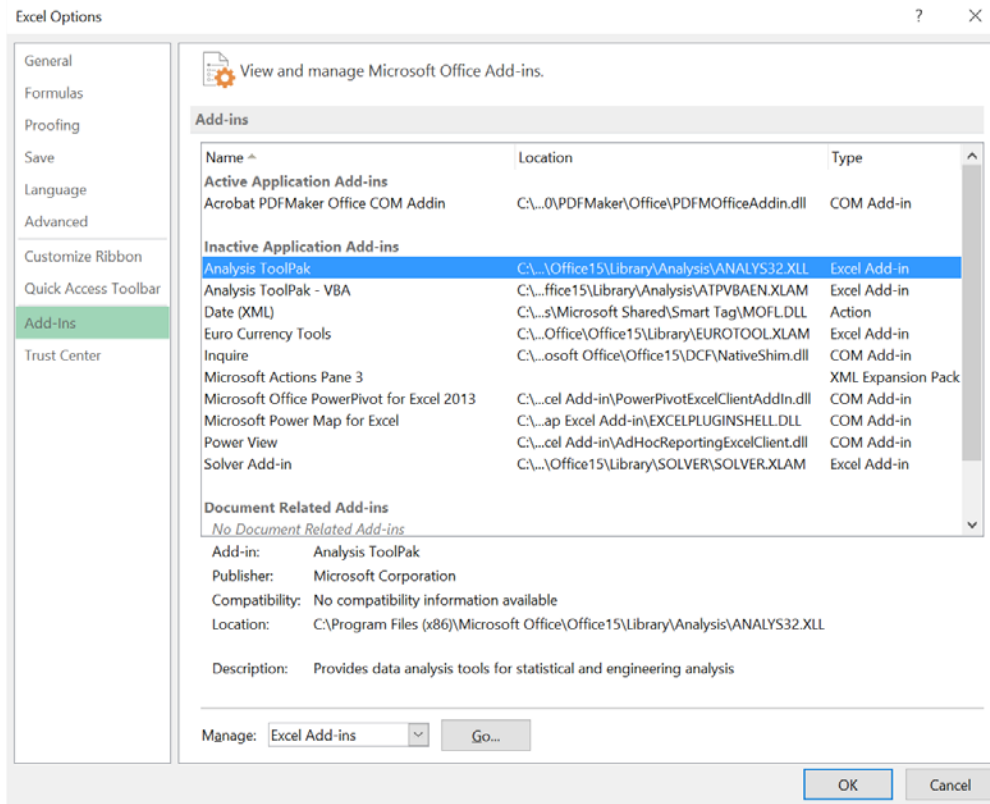
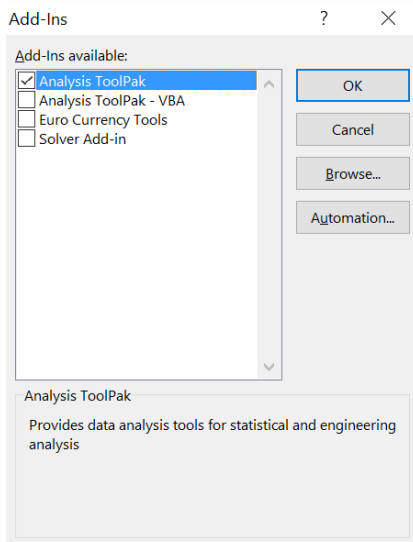


## Load and activate Analysis ToolPak

1. Start Microsoft Excel.
2. Click the File tab, click Options, and then click the Add-Ins category.



3. In the Manage box, select Excel Add-ins and then click Go.
4. In the Add-Ins box, check the Analysis ToolPak check box, and then click OK.



Now, when you click on the "DATA" tab of your version of Excel, you should see the "Data Analysis" Option on the far right.